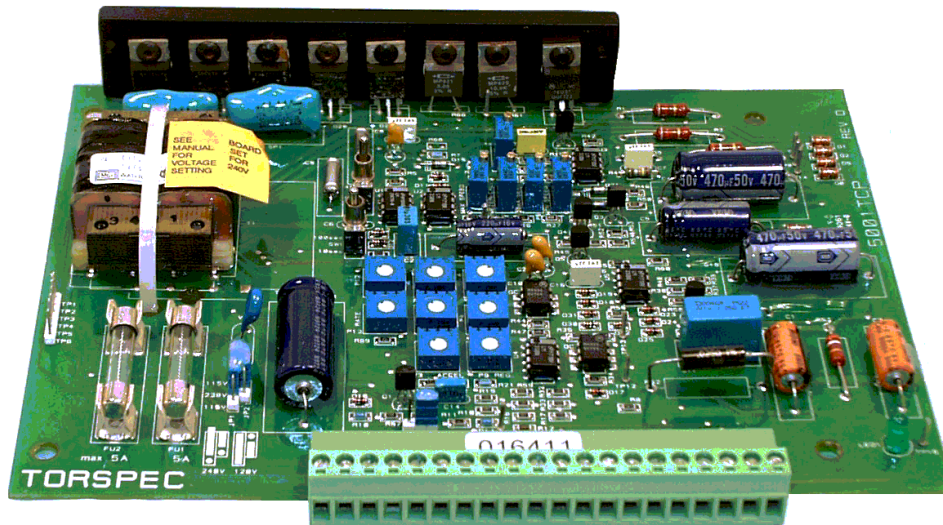


TORSPEC™ VARIABLE SPEED DRIVE CONTROLLER



QUICK START SETTING UP MANUAL 5001TCP SPEED CONTROLLER

WARNING

*Disconnect all incoming power before working on this equipment.
Follow power lockout procedures.
Use extreme caution around electrical equipment.
Do not touch the circuit board while power is applied.*



Torspec International Inc.
15 Cargill Drive
Seguin, Ontario, Canada P2A 0B2
Phone: (416) 213-1026
Fax: (705) 732-4466
E-mail: sales@torspec.com

Torspec International (USA) Inc.
13507-C East Boundary Road
Midlothian (Richmond), VA U.S.A. 23112
Phone: (804) 744-5521
Fax: (705) 732-4466
E-mail: sales@torspec.com

Web-Site: www.torspec.com

Manufacturers & Suppliers of World Class Quality Variable Speed Drives & Controls

TABLE OF CONTENTS

OUTLINE3

START-UP3

JUMPER SETTINGS.....4

5001TCP DIMENSIONAL LAYOUT DRAWING FOR SPEED CONTROL BOARD5

5001TCP DRIVE INTERCONNECTION DRAWING6

5001 TERMINAL STRIP CONNECTION DRAWING7

OUTLINE

The purpose of this QUICK START manual is to provide the experienced installer the basic installation instructions. It is strongly recommended that the complete manual be read for a full understanding of all the drive features.

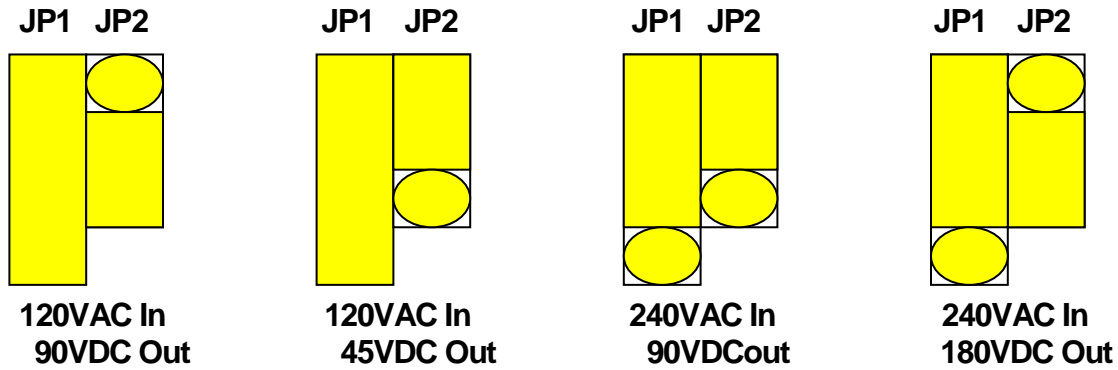
START-UP

- 1) Mount the control board and connect wires. Be sure to interlock the motor starter with the controller's power supply. Use shielded wire on the low voltage wiring.
- 2) Verify the supply voltage and set jumpers JPI and JP2 accordingly. See the template on the board for the correct positions. Set SW2 to match the motor speed, 4P = 1800 RPM, 2P = 3600 RPM, for the 100, 132, 160, 180 and 225 DC clutches. For use with the 280TCD and 305TCD the position needs to be put in the 2-pole position.
- 3) Power up the drive and verify correct rotation. With the main speed pot (or external reference) at minimum, set P1 so the LED just flickers.
- 4) Increase the reference to maximum and set P2 so the drive is running at the maximum permissible speed as marked on the drive's nameplate. PI may need to be reset.
- 5) Consult the attached layout and connection information for reference.
- 6) If the controller is not operating satisfactory or difficulties are experienced, consult the large manual.

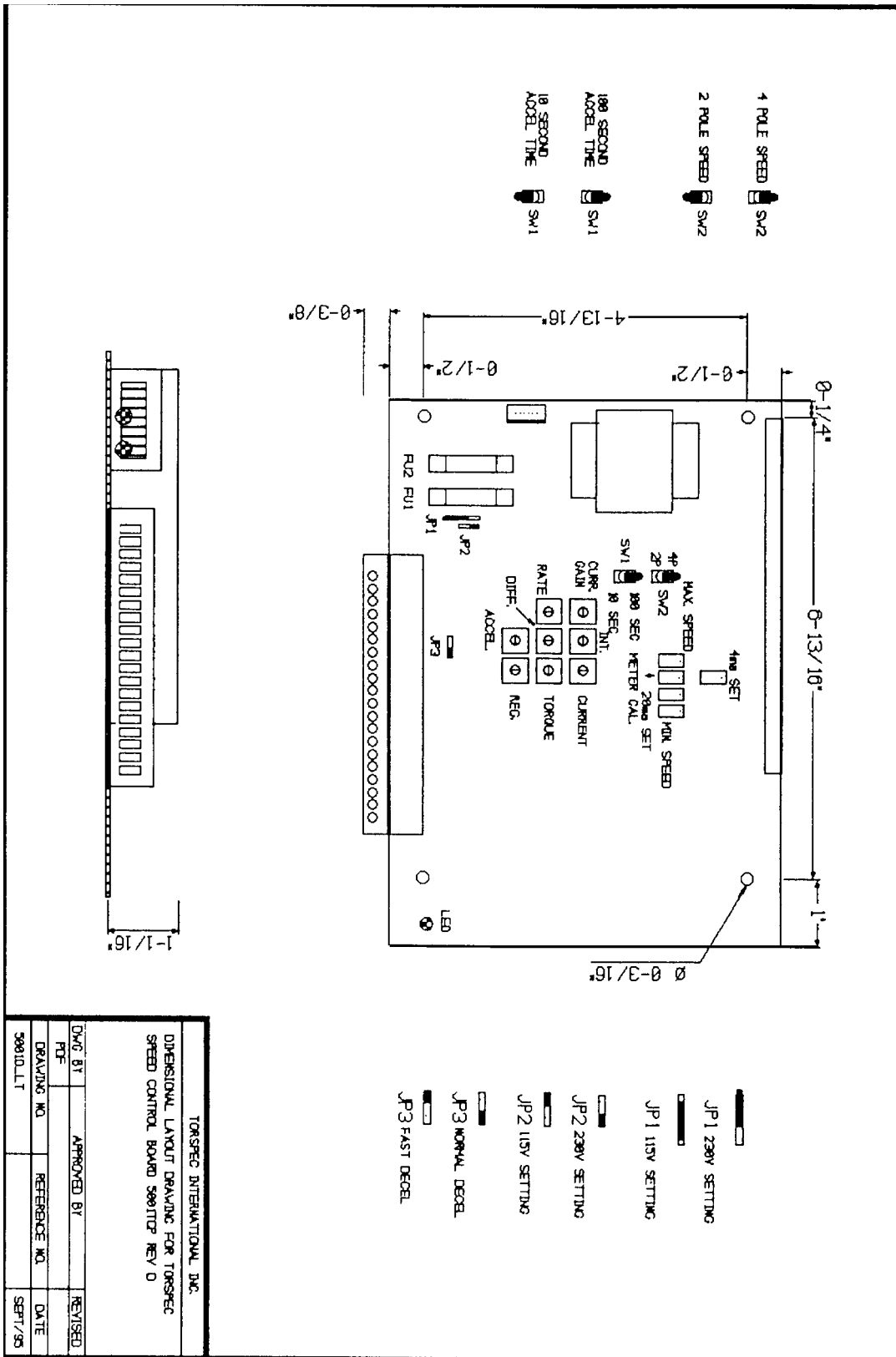
5001TCP JUMPER SETTINGS

The 5001TCP can be set up for 120 or 240VAC input. These input voltages, long with jumpers JP1 and JP2 set in the proper locations, can give the user different voltages on the output.

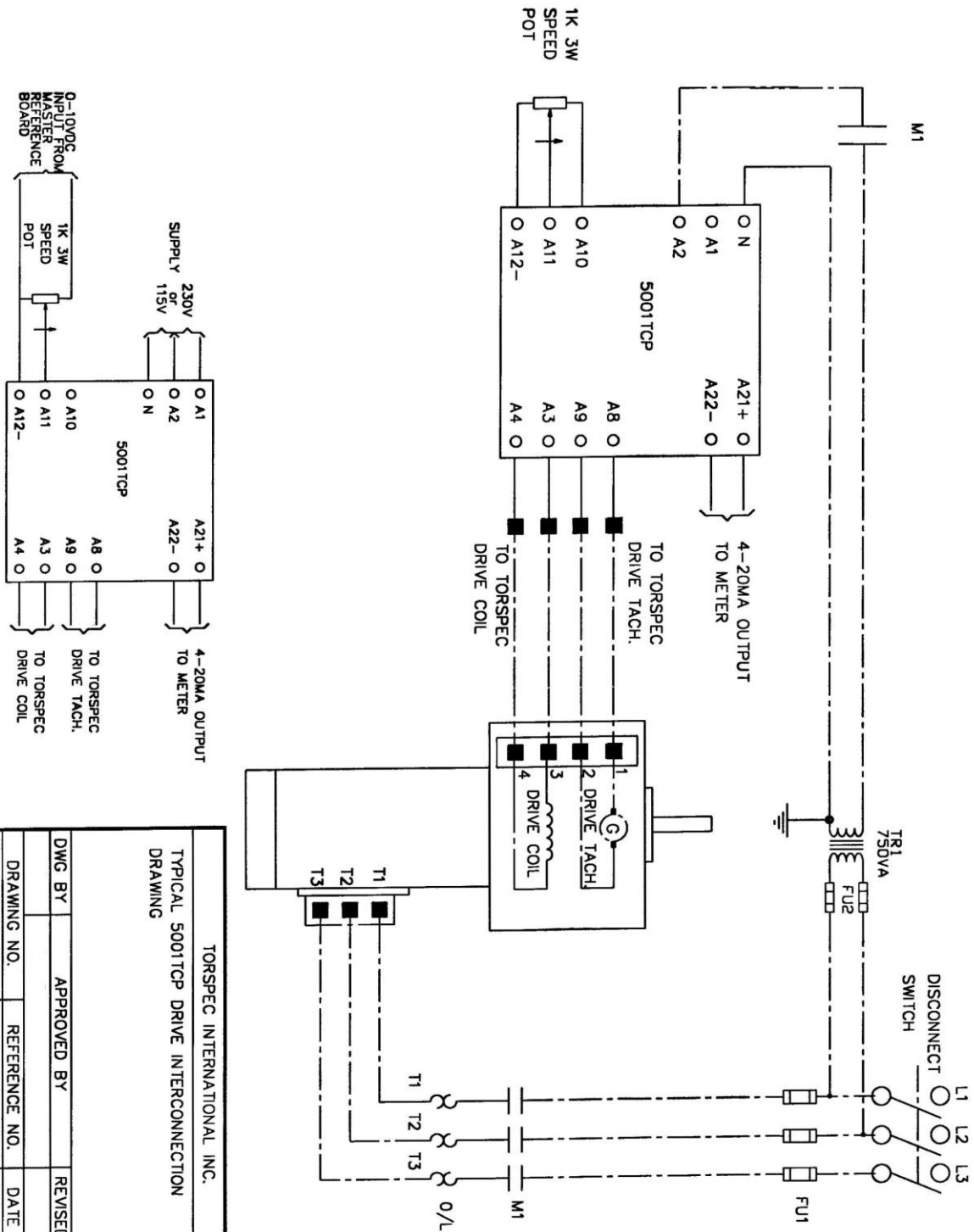
Jumpers can be set as follows to achieve desired output voltages.



5001TCP DIMENSIONAL LAYOUT DRAWING FOR SPEED CONTROL BOARD

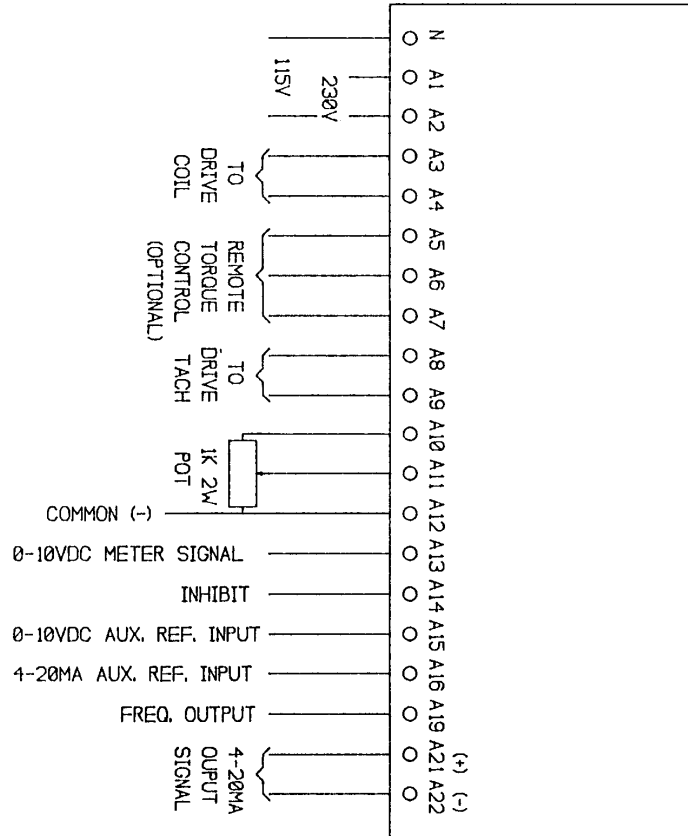


5001TCP DRIVE INTERCONNECTION DRAWING



TORSPEC INTERNATIONAL INC.			
TYPICAL 5001TCP DRIVE INTERCONNECTION DRAWING			
DWG BY	APPROVED BY	REVISED	
DRAWING NO.	REFERENCE NO.	DATE	
5001INTE		AUG/00	

5001 TERMINAL STRIP CONNECTION DRAWING



ECL INTERNATIONAL INC			
TERMINAL STRIP CONNECTION DRAWING			
DESIGNED BY	APPROVED BY	REVISION	
DRAWN BY	REFERENCE NO.	DATE	
		11/10/01	